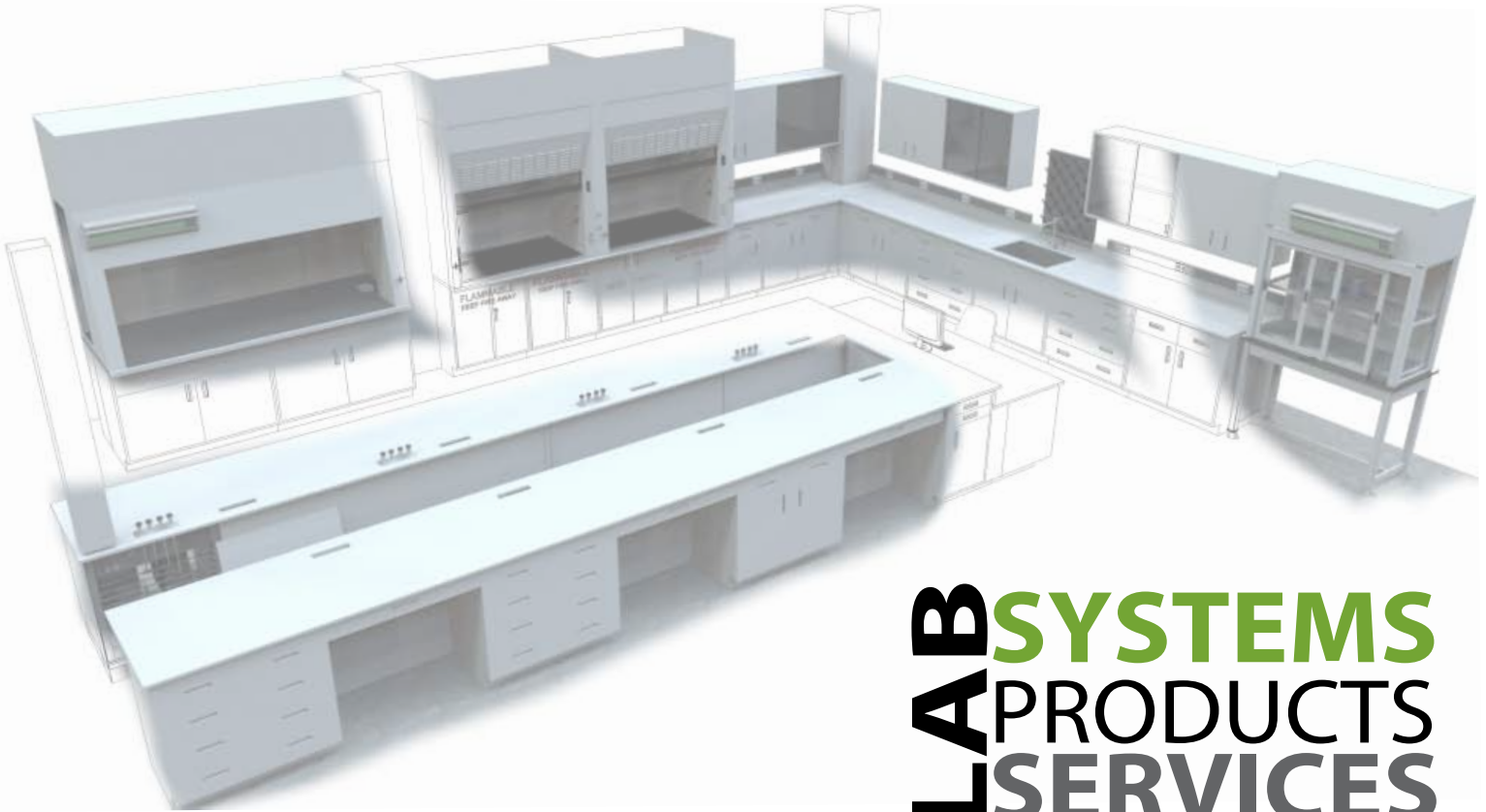




Gray & Green is a strategic performance team of laboratory remodeling and construction professionals.

From the smallest single cabinet replacement to the most complicated laboratory building - we can provide any solution for your lab project.



LAB SYSTEMS
PRODUCTS
LAB SERVICES



www.GrayGreenLabSystems.com

Gray & Green Lab Systems

In addition to permanent labs, we also can create a lab to suit your needs wherever you are.

- Modular Labs: Using our proven method of sequencing, it takes less than 1/2 the time to construct than a permanent lab, yet offers all the same amenities & requirements found in a traditional building.
- Moveable Labs: Everything you need in a lab, but can be moved on skids.
- Mobile Labs: The convenience of a lab at your temporary location.

Gray & Green Lab Products

We supply your lab with durable, high quality products made in the U.S.A.

We are experts in:

- Filtered Chemical Fume Hoods fitted with Neutrodine® filtration.
- Ducted Chemical Fume Hoods, including including constant volume bypass, variable air volume and high efficiency/low flow hoods.
- Halo Neutrodine lab air filtration designed to remove the nuisance orders in the lab quietly and effectively without removing any of the conditioned air.
- All other ventilation devices such as snorkels, vented workstations, clean benches, biosafety cabinets, and any other task specific devices.
- Casework: painted metal or wood, polypropylene, phenolic, and stainless steel.
- Critical storage & shelving.
- All work surface choices: epoxy resin, phenolic, stainless steel, edge grain maple, solid surface, ceramic and granite.
- Fixtures: faucets, sinks, services, pegboards, eyewashes and safety showers, etc.
- Gas Chromatography workstations and instrument gas piping.
- All products offered must meet or exceed SEFA© design standards.

Gray & Green Lab Services

Count on us to ensure your lab is running at its best

- Scheduled Routine Preventative Maintenance: Periodic fume hood recommissioning (in compliance with all local and national performance codes and standards, methods of testing and/or customer established standards) and inspection of exhaust system components.
- Turnkey lab casework and fume hood installation. Including plumbing, electrical and fume hood exhaust connection to the casework and fume hoods
- Instrument gas piping design & installation.
- Laboratory renovation design service & preparation of construction documents in accordance with principles set forth by I²SL (Labs for the 21st Century), ASHRAE Lab Design Guide, USGBC LEED Guidelines and accepted industry "best practice" standards.
- Lab area HVAC design and installation and fume hood face velocity control.
- ANSI/ASHRAE-110-2016 Methods of Testing Performance of Laboratory Fume Hoods "as installed", NFPA-30, NFPA-45, ANSI/AIHA Z9.5 Laboratory Ventilation Standard.



From Top: Modular Lab, outside; Modular Lab, inside; Moveable Lab; Mobile Lab



www.GrayGreenLabSystems.com

Houston, TX • Austin, TX
(832) 288-5958



Gray & Green Laboratory Systems supply and install metal and wood casework, the latest in filtered fume hoods, ducted fume hoods, corrosion resistant laboratory tops, service fixtures and all the accessories that make your laboratory a unique workspace. We will be there with you every step of the way; from design to installation to service...

Filtered Fume Hoods We proudly offer filtered fume hoods with the most advanced filtration technology for safe and green labs. Choose from hoods that come simply with a filter matched to your specific needs or a hood with an advanced built-in safety system and multi-use filter(s).

Instrument Gas Piping

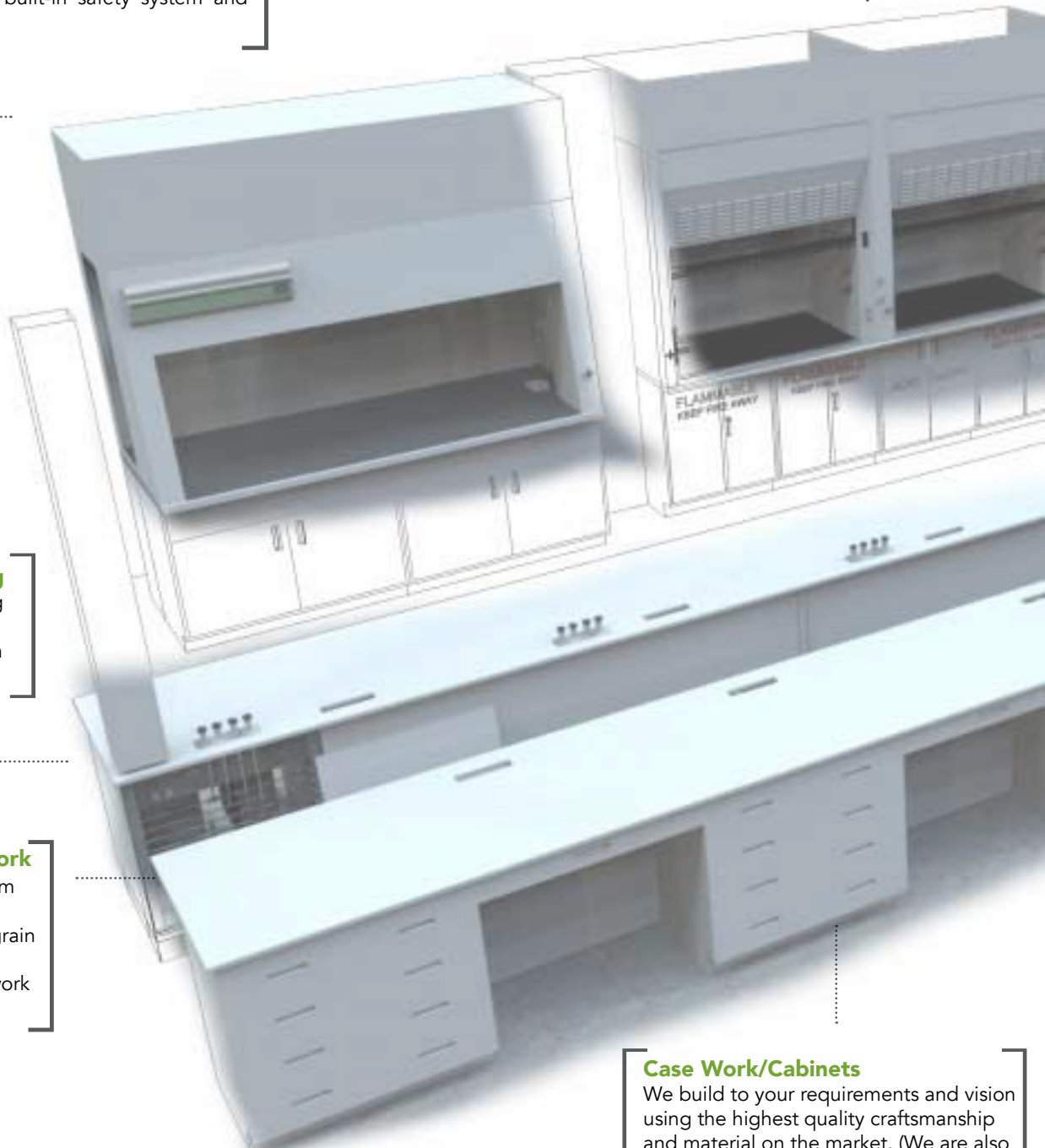
We ensure that the piping is the proper material for the gases you are using in your lab.

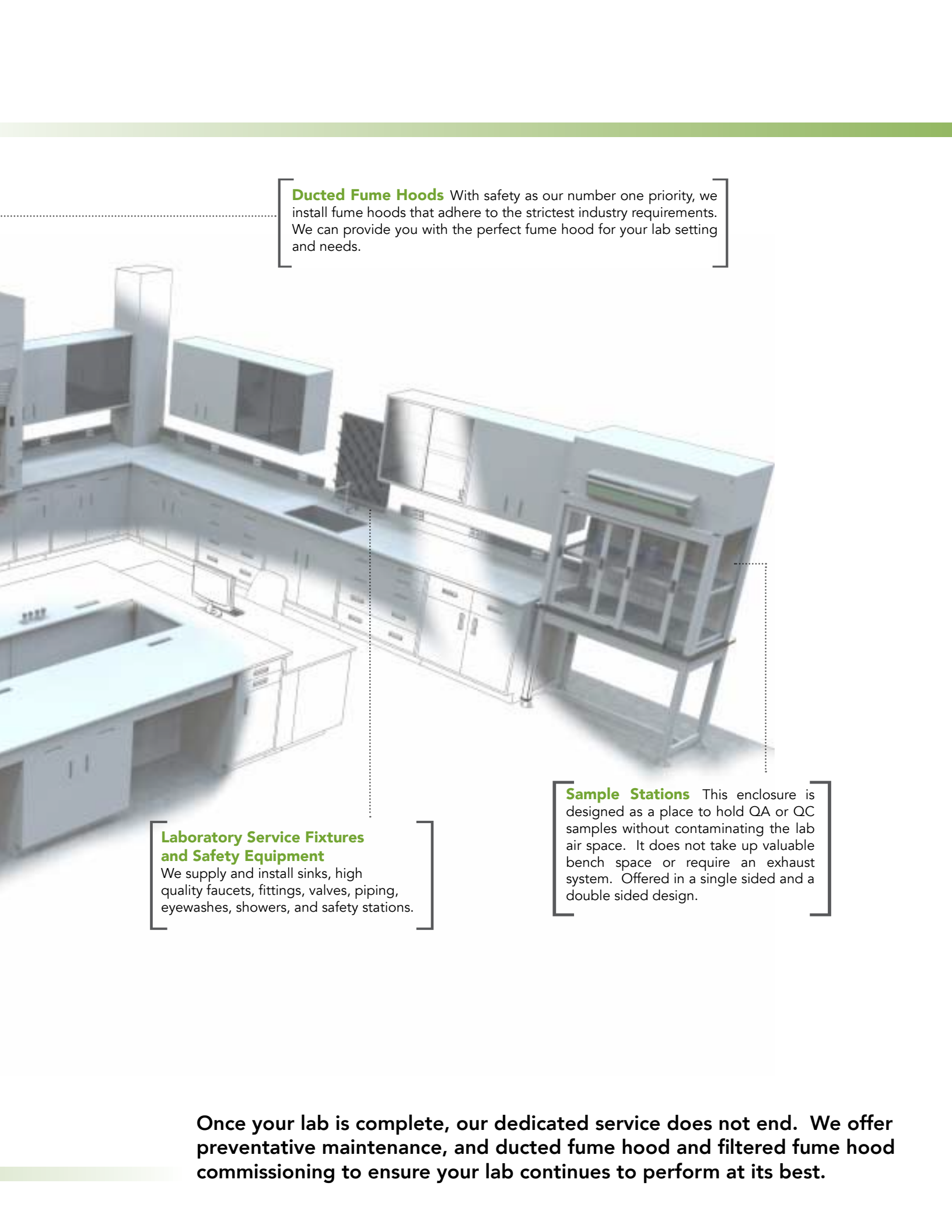
Counter Tops & Work Surfaces

Choose from epoxy resin, phenolic, stainless steel, edge grain maple, solid surface, ceramic and granite work surfaces.

Case Work/Cabinets

We build to your requirements and vision using the highest quality craftsmanship and material on the market. (We are also ADA compliant).





Ducted Fume Hoods With safety as our number one priority, we install fume hoods that adhere to the strictest industry requirements. We can provide you with the perfect fume hood for your lab setting and needs.

Laboratory Service Fixtures and Safety Equipment

We supply and install sinks, high quality faucets, fittings, valves, piping, eyewashes, showers, and safety stations.

Sample Stations This enclosure is designed as a place to hold QA or QC samples without contaminating the lab air space. It does not take up valuable bench space or require an exhaust system. Offered in a single sided and a double sided design.

Once your lab is complete, our dedicated service does not end. We offer preventative maintenance, and ducted fume hood and filtered fume hood commissioning to ensure your lab continues to perform at its best.